

Rosbach (8071445) - several furnished single apartments

| | | | | |
|-----------------------------|---|------------------------------|------------------------|------------------------------|
| short-term rental apartment | Rent incl. add. costs 1.970,00 EUR per Month | Living space ca. 48,00 qm | Number of rooms 2,0 | Available from 17.05.2024 |
|-----------------------------|---|------------------------------|------------------------|------------------------------|

Other dates

| | |
|-----------------------|------------------|
| District | |
| Deposit | 0,00 EUR |
| Floor | |
| Available until | Open-ended |
| Minimum rental length | 30 days |
| Smoking / Nonsmoker | Non-smokers only |

Further details

| | |
|------------|------------------|
| - möbliert | - Neubau |
| - Aufzug | - PKW-Stellplatz |
| - ruhig | |

Facilities

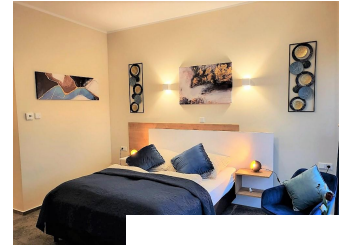
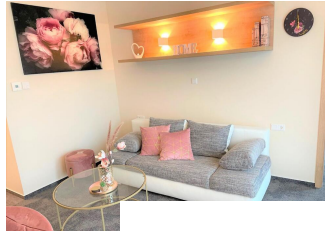
| | |
|---------------------|---------------------|
| - Energieausweis | - Duschbad |
| - eig. Bad | - Einzelbett |
| - Internet-Anschluß | - Reinigungsservice |
| - Singleküche | - Teppichboden |
| - Trockner | - Wäsche |
| - Waschmasch. | - Klimaanlage |
| - bathroom | |
| - with shower | |

References

Please read our Notes on currency conversion under <http://www.homecompany.de/en/currency-info>

Website synopsis

<http://frankfurt.homecompany.de/en/object/AG8071445>



Description

Our stylishly furnished and fully equipped basic apartments invite you to feel "at home".

A fully equipped single kitchen with hob and extractor hood, as well as a private bathroom with shower and toilet offer you an appealing level of comfort.

The sleeping and living area is furnished with a desk, a seat, a wardrobe and a single bed and creates a homely atmosphere.

The prices for basic apartments are between 1132.06 and 1956.50 euros per month, depending on size and equipment.

Requirements according to EnEV:

Primary energy requirement of this building 112.9kWh/(m²*a)

Required value 115.2 kWh/(m²*a)

Final energy requirement heat 82.0 kWh/(m²*a)

final energy cond

Use of renewable energies to cover heating and cooling requirements based on the EEWärmeG:

Solar radiant energy: 8.7%

Heat and cold recovery: 19.6% rh electricity 17.6 kWh/(m²*a)