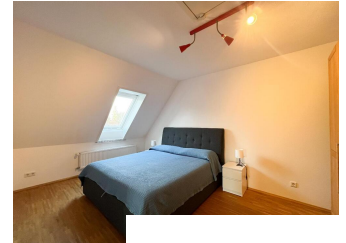


Ginnheim (8071505) - Expansive 6-Room Family Apartment with 3 Bedrooms i

short-term rental apartment	Rent incl. add. costs 2.900,00 EUR per Month	Living space ca. 151,00 qm	Number of rooms 6,0	Available from 09.05.2024
-----------------------------	---	-------------------------------	------------------------	------------------------------

Other dates

District	Frankfurt am Main Mitte-Nord
Deposit	2-3 MM
Floor	1.Floor
Available until	Open-ended
Minimum rental length	365 days
Smoking / Nonsmoker	Non-smokers only
Balcony	yes

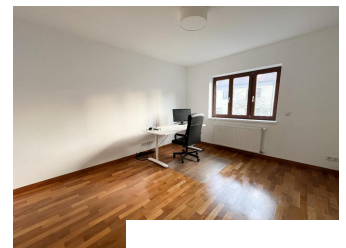
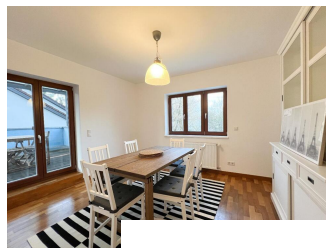
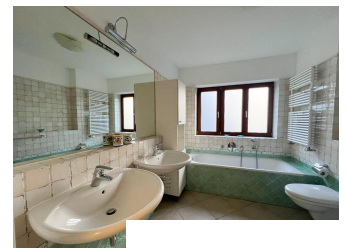
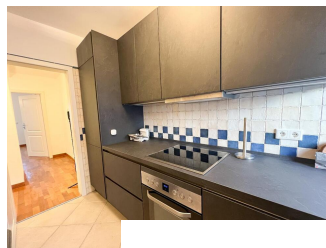


Further details

- Erstbezug	- grün
- möbliert	- PKW-Stellplatz
- verkehrsgünstig	

Facilities

- Arbeitszimmer	- 2 Schlafzimmer
- Balkon	- Doppelbett
- Duschbad	- Einbauküche
- Einzelbett	- Energieausweis
- Fliesen	- Hausrat
- Internet-Anschluß	- Kinderzimmer
- Parkett	- Reinigungsservice
- Rollläden	- Spülmasch.
- Tageslichtbad	- Trockner
- TV	- Wannenbad
- Waschmasch.	- Wäsche
- Telefon	
-	



References

Please read our Notes on currency conversion under <http://www.homecompany.de/en/currency-info>

Website synopsis

<http://frankfurt.homecompany.de/en/object/AG8071505>

Description

Newly furnished family apartment, spanning 2 floors, with 3 bedrooms.
 Living: Large living room with TV and sofa.
 Kitchen: New, high-quality fitted kitchen with all appliances.
 Dining area: Separate dining room with seating for 6 people and access to the balcony.
 1st Bedroom: Double bed and large wardrobe.
 2nd Bedroom: Single bed, wardrobe, and desk.
 3rd Bedroom: Single bed and wardrobe.
 Office: Large office with a desk.
 Bathroom: High-quality bathroom equipped with shower, bathtub, toilet, and bidet.
 2nd Bathroom with shower, toilet, bidet, washing machine, and dryer.
 Technical equipment: Electric shutters on all windows, internet, alarm system, wall box for car charging.
 Balcony: Large seating area.
 Parking: In front of the house.
 Other rental information: Rent includes all utility costs. The tenant bears the electricity costs for the wall box.
 Connectivity and local information:
 Ideal transport connections to the city center or to Eschborn, etc. There are two tennis facilities nearby.
 Close to the Nidda meadows, ideal bicycle paths into the city center, Westend, etc.
 Supermarket Rewe within walking distance.

Print out 09.05.2024