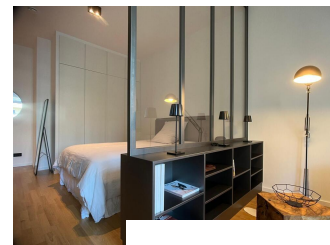
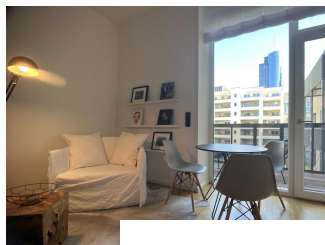


## Bahnhofsviertel (8070778) . 1 room apartment in Downtown close to the Mainstation

short-term rental apartment	Rent incl. add. costs 1.350,00 EUR per Month	Living space ca. 40,00 qm	Number of rooms 1,0	Available from 29.11.2023
-----------------------------	-------------------------------------------------	------------------------------	------------------------	------------------------------

### Other dates

District	Innenstadt I
Deposit	2 MM
Floor	1.Floor
Available until	Open-ended
Minimum rental length	90 days
Smoking / Nonsmoker	Non-smokers only
Balcony	yes

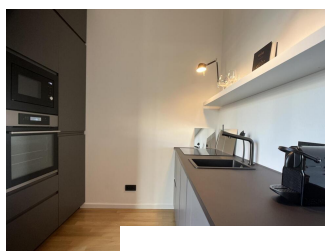


### Further details

- möbliert	- Aufzug
- hell	- Keller
- ruhig	- U-Bahnnähe
- Neubau	- verkehrsgünstig

### Facilities

- offene Küche	- Parkett
- Fussbodenheizung	- Balkon
- Doppelbett	- Duschbad
- Einbauküche	- Energieausweis
- Fliesen	- Garten
- Hausrat	- Internet-Anschluß
- Rollläden	- TV
- Spülmasch.	- Waschmasch.
- <b>bathroom</b>	
- with shower	
- <b>flooring material</b>	
-	
-	



### Description

Modern and high-quality furnished single apartment in downtown Frankfurt.

Furnishing

Fully equipped, high-quality eat-in kitchen with all electr. Devices.

dining area:

Small table with chairs

Bedrooming:

double bed

Bath:

Bathroom with floor-level shower

Technical Equipment:

Underfloor heating, WLAN/TV, electr. shutters, washing machine

storage space:

Private basement compartment & bicycle storage

Balcony:

East balcony available

Garden:

Community garden & yard

House info:

Completely renovated and modernized apartment building (new building standard)

Parking:

Parking on the street

Additional rent infos:

All-inclusive rent including all additional costs

Area and district information:

Not far from Jürgen-Ponto-Platz, almost directly at the train station, within walking distance to downtown, Tausnusanlage, Alte Oper, etc. Many bars and restaurants, bakeries, supermarkets, etc. all within walking distance.

Due to its central location, the station district is very well connected to the transport network. The main station offers a connection to regional and long-distance traffic. Tram lines 11 and 12 pass through the district on Münchener Straße. The underground station Willy-Brandt-Platz (lines U1-U5) and the S-Bahn station Taunusanlage (lines S1-S6, S8, S9) open up the east and north-east of the district.

[Print out 29.11.2023](#)

### References

Please read our Notes on currency conversion under <http://www.homecompany.de/en/currency-info>

### Website synopsis

<http://frankfurt.homecompany.de/en/object/AG8070778>