

## Klein-Karben (8071534) - house for interim sublease

short-term rental house	Rent incl. add. costs 2.800,00 EUR per Month	Living space ca. 120,00 qm	Number of rooms 4,0	Available from 15.10.2024
----------------------------	---	-------------------------------	------------------------	------------------------------

### Other dates

District	Klein-Karben
Deposit	2-3 MM
Floor	Bottom floor
Available until	15.06.2025
Minimum rental length	180 days
Smoking / Nonsmoker	Non-smokers only
Balcony	yes

### Further details

- grün	- möbliert
- Keller	- PKW-Stellplatz

### Facilities

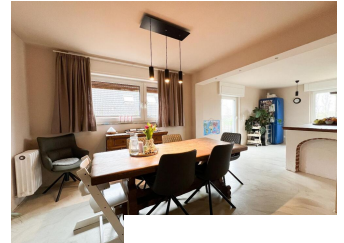
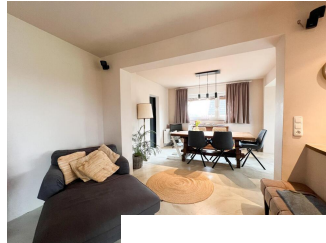
- 2 Schlafzimmer	- Doppelbett
- Duschbad	- Einbauküche
- Energieausweis	- Gäste-WC
- Hausrat	- Internet-Anschluß
- Loggia	- offene Küche
- Spülmasch.	- Tageslichtbad
- Terrasse	- Trockner
- TV	- Waschmasch.
- <b>bathroom</b>	
- with shower	
- <b>kitchen</b>	
- fitted kitchen	
- <b>further rooms</b>	
- guest toilet	

### References

Please read our Notes on currency conversion  
under <http://www.homecompany.de/en/currency-info>

### Website synopsis

<http://frankfurt.homecompany.de/en/object/AG8071534>



### Description

Cozy house in the countryside, close to the Nidda, ideal for a family.

Living: large living room with sofa and integrated dining area.

Kitchen: open fully equipped kitchen

Dining area: beautiful dining table with 6 chairs

Sleeping: there are bedrooms on the 1st floor. Two children's rooms and a large bedroom with wardrobe.

Bathroom: 2 modern bathrooms (shower room and bathtub)

Guest toilet on the ground floor

Technical equipment: Internet

Terrace with garden and barbecue area/pizza oven.

Parking: 1 parking space in front of the garage

Other information about the rental agreement:

The house is ideal for families with pets. All additional costs are included.

There is an outdoor cat that may need to be fed once a day.

Connection and district information:

Klein-Karben, about 19 km from Frankfurt/Main. The big city is easy to reach by bus, S-Bahn (35 minutes) or car (20-25 minutes).

Supermarket and bus are within walking distance.

Mandatory information for the energy certificate:

will be given later